

THE FREDERICK DOUGLASS MEMORIAL



NEWSLETTER

The Fredrick Douglas Weed and Seed program in conjunction with East of the River Clergy Police Community Partnership (ERCPCP), has worked collaboratively with community-based organizations, district and federal government agencies and faith-based institutions, to establish on-going programming, outreach, and civic engagement opportunities for youth and residents. During the past year, the Weed and Seed program has used a proactive approach to engage youth and families with opportunities, activities and services. Through the coordination between partners to track youth referrals and community activities, Weed and Seed and ERCPCP have ensured continuous communication between partners to serve as the day-to-day program oversight.

The Frederick Douglass Memorial Weed and Seed with its partners have made dramatic strides in reducing violent crime among youths in the Southeast area of Washington, D.C. The collaboration among churches, law enforcement, social service agencies and area residents holds considerable promise to begin renewal and rebirth in neighborhoods east of the Anacostia River in the modified Weed and Seed boundaries outlined in the Police Service Areas (PSA) 701, 702, and 704. The Frederick Douglass Memorial Weed and Seed was honored to have the PSA “Officer of the Year”, Officer Lonnie Moses Jr. and the “PSA of Year”, PSA 701.

Mission:

“Our ‘Weed and Seed’ initiative to combat crime wins back our inner cities by weeding out gang leaders, drug dealers, and career criminals and seeding communities with expanded employment, educational, and social services.”

Former President George Bush

1992

The Weed and Seed strategy is developed for a designated neighborhood faced with chronic violent and drug crime. The size of the target area may geographically consist of several square blocks or a radius of a few miles. The population of a designated community must not exceed 50,000 residents. Frederick Douglas Memorial Weed and Seed strategy involves the following approach:

- It is a multi-agency, community-based strategy for a designated high-crime neighborhood
- Designed to “weed” out the worst criminal elements and
- “Seed” the community with social and economic revitalization.

THE FREDERICK DOUGLASS MEMORIAL WEED AND SEED GOALS

1. To improve Law Enforcement

Through collaborative efforts with the community, local law enforcement and judicial system establish a safe and drug-free community with focused efforts on deterring delinquent and violent crime associated with crew involved youth.

2. To increase Community Policing

Increase community participation and understanding of local law enforcement to nurture an amiable and collaborative relationship.

3. To improve Prevention/Intervention/Treatment services.

To implement an array of programming for children, youth, families and the elderly within the community providing positive outcomes and empowered skill sets to offset delinquent and criminal activities, while locating rehabilitation services to address substance, mental, and health concerns.

4. To improve Neighborhood Restoration

To develop and strengthen neighborhood resources and opportunities to improve the standard and quality of living in the designated community through participation in youth intern program designed to assist in neighborhood beautification, (other aspects of this component are small business developments, job training and employment, homeownership, etc.)

Weed and Seed Elements

- Steering Committee
- Official Recognition Strategy
- Law Enforcement
- Community Policing
- Prevention, Intervention & Treatment

- Neighborhood Restoration
- Safe Haven(s)

Safe Haven Sites

Woodland Terrace Community Center

2310 Ainger Place, SE
 Washington, DC 20020
 (202) 889-2663
 (202) 889-7713

Contact: Ahmad Braxton Jones, ERCPCP Program Coordinator
 Ms. Coward, Resident Council President
 Steve Zanders, Woodland tiger Sport and Educational Program

Carver Hall Family Strengthening Center

2338 Pitts Place SE
 Washington DC 20020
 (202) 610 -9851

Contact: Doris Cutler, Executive Director

Frederick Douglass Recreation Center / Henson Ridge Community

1898 Stanton Terrace, SE
 Washington, DC 20020
 (202) 645-3980

Contact: Isaac Entsua-Mencab, Site Manager
 Eric Chapman, ERCPCP Program Coordinator

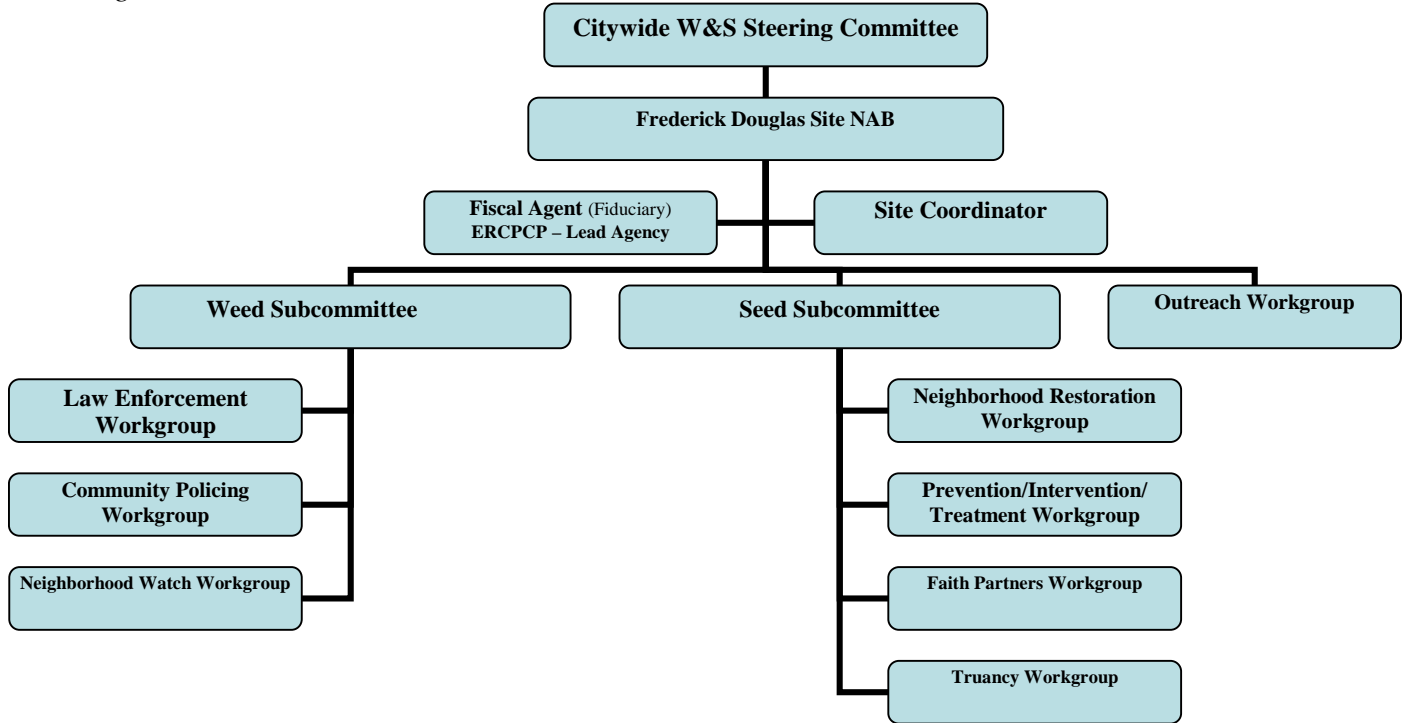
Partnering Programs

- Community Outreach
- National Global Youth Service Day
- 4-H Neighborhood Center Enterprise Youth Camps
- Youth Workshops and Activities
- East of the River Clergy Police Community Partnership's Man 2 Man, Girl Talk, and 40 Days Increase Peace conferences
- Field Trips and Retreats
- Youth Development for youth ages 14 – 21, after school Youth Tutoring program and Leadership Council.
- Community events and Service Learning projects in Coordination with Partnership
- After school Programs for youth 7 – 13 years.
- Community events
- Computer curriculum based educational programming

- Intervention and Mediation Activities
- DC Department of Recreation's youth activities, events and engagement programs
- Community mobilization and civic engagement
- Youth Vocational training and referrals
- Parent and youth workshops
- Community events and Service Learning projects in Coordination with Partnership
- Sasha Bruce Programming at the Henson Community.
- Home Based Counseling

The Frederick Douglass Memorial Weed and Seed (FDMWS) has a Neighborhood Advisory Board (NAB) that is the primary coordination and linkage structure to ensure adherence to timelines, strategic goals, implementation strategies and the exchanging of information, statistics, and resources among stakeholders. Community residents, organizations, businesses, government, and law enforcement are participating on the Board in some capacity and are committed to the aims of coordination, linkages, referrals, and service delivery. Within the subcommittees, coordination of activities, identification of resources and potential partners/vendors, service gaps, and referrals are provided and reported out to the general body. A minimum of one subcommittee member will participate on another subcommittee and in workgroups to ensure all efforts of the site are coordinated, and elements of stakeholders are infused throughout the site. This minimizes overlapping in service delivery and service gaps. Moreover, each subcommittee must have a minimum of one (1) resident for a quorum to ensure the community perspective is always present.

Organizational Structure



The organizational chart shown above depicts the *lines of authority* for the site. The Frederick Douglass Memorial Weed and Seed Neighborhood Advisory Board is one of three such Boards (see previous organization chart) under the Washington, D.C. Weed and Seed Steering Committee. The Required DEA representative will serve a voting member of both the Steering Committee and the Frederick Douglass Memorial Weed and Seed NAC. The FDMWS structure includes two assistance positions – the Site Coordinator and the Fiduciary (fiscal agent). The proposed Frederick Memorial Douglass Weed and Seed site is structured into two (2) subcommittees, which have workgroups to complete focused goals and objectives as outlined in the strategic plan. The workgroup – Outreach – provides a support function for all subcommittees and workgroups.

The **Weed Subcommittee** is comprised of three workgroups: *Law Enforcement* which focuses on drug trafficking, violent and delinquent crimes, prosecution of crimes, supervision of parolees and probationers, parental accountability with regards to truancy and persistent juvenile delinquents, property abatement, liquor licensing monitoring,; *Community Policing* dedicated to engaging residents in dialogue to assist with enforcement, outreach to local businesses and property owners to upkeep property to deter criminal activity, frequent car, bike and foot patrols to reintroduce “Officer Friendly” in the community. Recruitment for Model Extravaganza program and *Neighborhood Watch* will be established in year two (2) to empower residents to reclaim communities and help local law enforcement identify trouble areas, problem persons, and quality of life issues.

The **Seed Subcommittee's** composition consists of four (4) workgroups: (a.) *Truancy*; (b.) *Faith Partners*; (c) *Prevention/Intervention/Treatment*; (d.) *Neighborhood Restoration*. The Truancy Workgroup is tasked with exploring resources for truant youth; monitoring and researching legislation and District of Columbia Public School mandates regarding truancy; identifying truant youth and/or households; working with law enforcement, parents and social workers to intervene in truant matters; and monitoring preventative truancy measures. Faith partners are a source of volunteers to support programming; provide a forum for encouraging the community to support Weed and Seed efforts; serve as liaison with other faith institutions citywide to bring services, volunteers, and expertise to the community; provide Safe Havens for various communities within the boundary; identify parishioners willing to serve as mentors and families willing to adopt and/or mentor families within boundary; and allocate resources to propel the site. The Prevention/Intervention/Treatment Workgroup is focused on monitoring the trends of violence; directing resources and developing programming to engage high-risk involved juveniles in intervention activities; identifying existing prevention programs and coordinating the work of the entities; developing community forums to address violence; and serving on one of the workgroups for the Weed subcommittee to ensure program reflects and compliments their efforts. Expanding opportunities for youth and families in the site communities by increasing cultural awareness, personal accountability; empowering residents to take pride in their surroundings; and encouraging businesses and developers to explore opportunities in this area of the city are the primary goals of the Neighborhood Restoration Workgroup.