

Violence Intervention Partnership Bi-Annual Report June 07'

Background

Crime analysis and police intelligence indicates that juveniles account for a sizable portion of crew-related activity east of the Anacostia River. More than half of the 17 juvenile homicides in DC during 2006 occurred east of the river, as well as approximately 40% of all juvenile arrests during 2006. Compounding the problem, persons under 18 years old comprise 32% of the population east of the river, more than twice the DC average. To address this problem, Rev Donald Isaac, East of the River Clergy Police Community Partnership, the U.S. Attorney Office, the Metropolitan Police Department, the PSN Task Force and East of the River Community Based Organization collaborated with other stakeholders to form the ROC East Violence Intervention Partnership (VIP). (See Page 3 for additional Ward 7 & 8 MPD Crime Statistics)

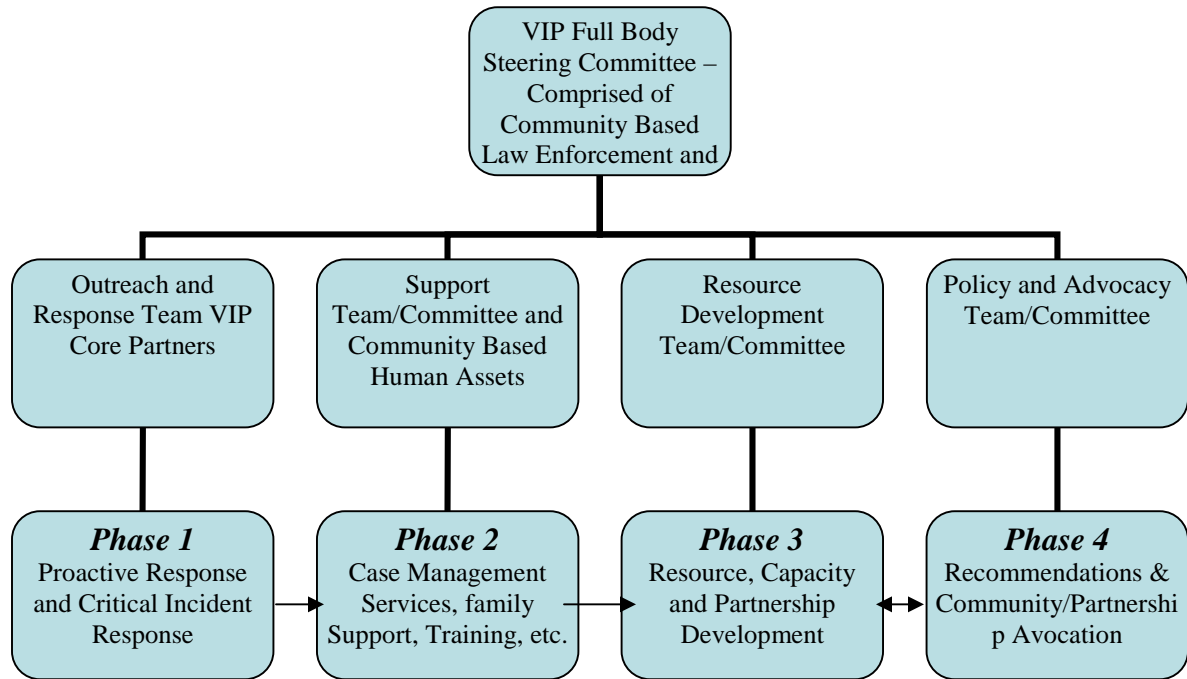
Overview

The VIP includes representatives from law enforcement (U.S. Attorney's Office, Metropolitan Police Dept, DC Office of the Attorney General, the Court Services and Offender Supervision Agency), the judiciary (DC Family Court/Court Social Services), community- and faith-based organizations (East of the River Clergy Police Community Partnership, East River Family Strengthening Collaborative, Far Southeast Family Strengthening Collaborative), street-level outreach workers (Peaceholics, DC Parks and Recreation's Roving Leaders) and other community stakeholders, all dedicated to combating crew-related violence East of the River. Established in December 2005, the VIP focuses on systemic issues, such as truancy, delinquency and recidivism, by coordinating enforcement efforts, and by integrating programs and services. Conflict resolution is merged with street-level outreach, and buttressed with mentoring and activities that enforce life skills to create a solid support system for at-risk youth. The model provides a full network of comprehensive, wrap-around services to address problems at their roots, leveraging public and private resources.

Outcomes

Though still in its infancy, the VIP has made remarkable progress. Written protocols governing incident response and outreach team mobilization have been developed, and the VIP meets regularly to discuss cases, partnership referrals, street-level mediations, community-based outreach efforts, and to assess implementation of its violence reduction, intervention and prevention strategies. To date, the VIP has made well over 150 partner referrals for a variety of law enforcement, as well as individual and family case management, family strengthening and other supportive services. VIP partners have intervened to facilitate mediations for more than 20 male crews, and 15 female crews, diffusing incidents among dozens of members to avoid further escalations of violence. Most of the mediations are held in community-based settings (such as schools or churches), and a concerted effort is made to involve parents in mediations with juveniles. Retreats for rival crew members have been conducted successfully, and programs have been implemented that connect youth with community service opportunities to fulfill court-ordered requirements. Many of the participants have been placed in part-time jobs and/or enrolled in partner sponsored programs that foster development of life skills and conflict resolution skills.

VIP Organization Model and Communication Flow



Process Outcomes

Performance Outcomes

Full Body VIP Meetings (Phase 1 & 4)	Outreach and Response Team Meetings (Phase 1)	Intervention and Mediations (Phase 1&2)	Community Engagement / Service Projects (Phase 2 & 3)
<ul style="list-style-type: none"> ◆ 5 Full Body Meeting ◆ 14 community based, law enforcement and faith based partners attending ◆ 95% Participation ◆ 84% of recommendations made by partners have been address 	<ul style="list-style-type: none"> ◆ 15 weekly Outreach and Response Team Meeting ◆ 7 Core VIP Partners ◆ 90% Participation ◆ 65 Youth/young adult referrals ◆ 100% Youth and Families excepted services 	<ul style="list-style-type: none"> ◆ 17 VIP Referrals to ERFSC & 95% of referrals have met there goals ◆ 49 VIP Referrals to FSFSC 77 % of referrals have met there goals ◆ 28 Outreach Team Referrals & 100% of youth receptive to intervention ◆ 19 Mediation Referrals to Outreach Team 78% of mediation response ◆ 26 CRT Homicide referrals & 100% response for services 	<ul style="list-style-type: none"> ◆ 7 of Service Learning projects identified per month & 100% of community service projects completed have exceeded desired community participation ◆ 600 of youth / young adults have participated in service/learning Projects ◆ More than 20 community partners have participated in Service/Learning Projects

Crime Stats

Sixth District

Time Period **January 2006 – June 19, 2006**
 Vs. Period **January 2007 – June 19, 2007**

	Last	This	% Change
Homicide	18	20	11%
ADW	259	201	-22%

Seventh District

Time Period **January 2006 – June 19, 2006**
 Vs. Period **January 2007 – June 19, 2007**

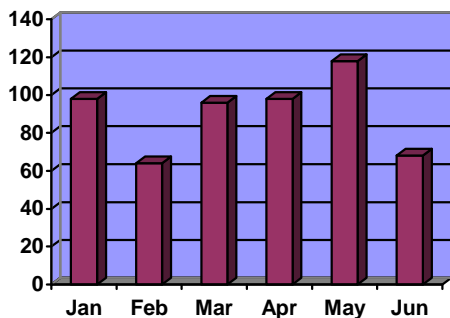
	Last	This	% Change
Homicide	20	23	15%
ADW	301	302	0

ROC East

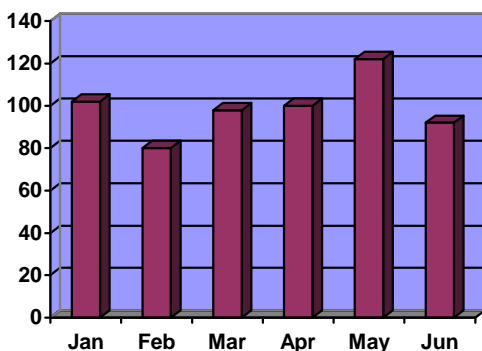
Time Period **January 2006 – June 19, 2006**
 Vs. Period **January 2007 – June 19, 2007**

	Last	This	% Change
Homicide	38	43	13%
ADW	560	503	-10%

ROC East Jan. 1, 2007 – June 19, 2007
 ADW and Homicide by Month



ROC East January 1 2006 – June 19, 2006
 ADW and Homicide by Month



Sixth District Juvenile Victims

Time Period **January 2006 – June 19, 2006**
 Vs. Period **January 2007 – June 19, 2007**

	Last	This	% Change
ADW	53	30	-43%

Seventh District Juvenile Victims

Time Period **January 2006 – June 19, 2006**
 Vs. Period **January 2007 – June 19, 2007**

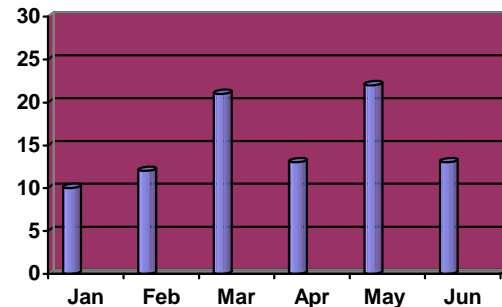
	Last	This	% Change
ADW	60	61	2%

ROC East Juvenile Victims

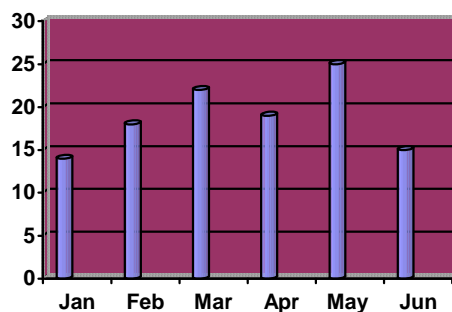
Time Period **January 2006 – June 19, 2006**
 Vs. Period **January 2007 – June 19, 2007**

	Last	This	% Change
ADW	113	91	-19%

ROC East January 1, 2007 – June 19, 2007
 ADW by Month Juvenile Victims



ROC East January 1, 2006 – June 19, 2006
 ADW by Month Juvenile Victims



Source(s) of data: www.mpdc.gov.gov, CITCAU